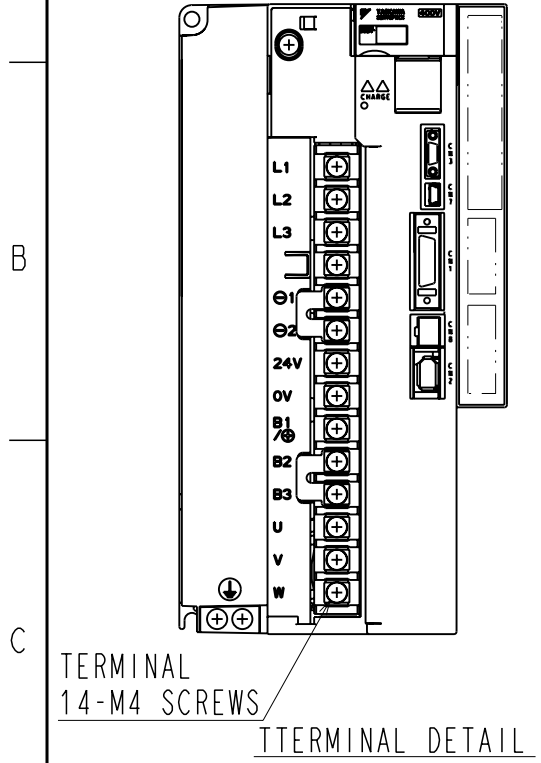


DWG. NO. 900-048-858-2/2

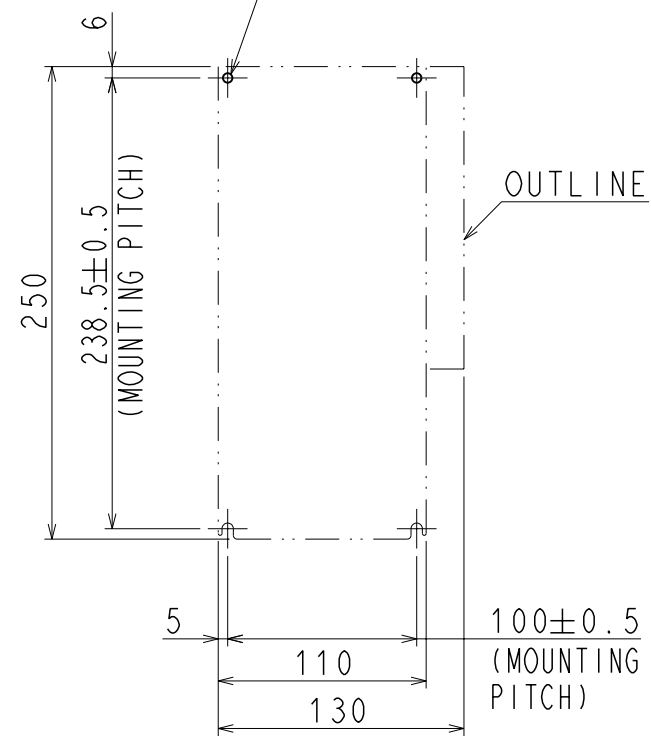
(NOTE1) This drawing is the base-mounted type.
 (NOTE2) Refer to the USER'S MANUAL for standard for installation.
 (NOTE3) Refer to the another drawing for the outline of the option unit.



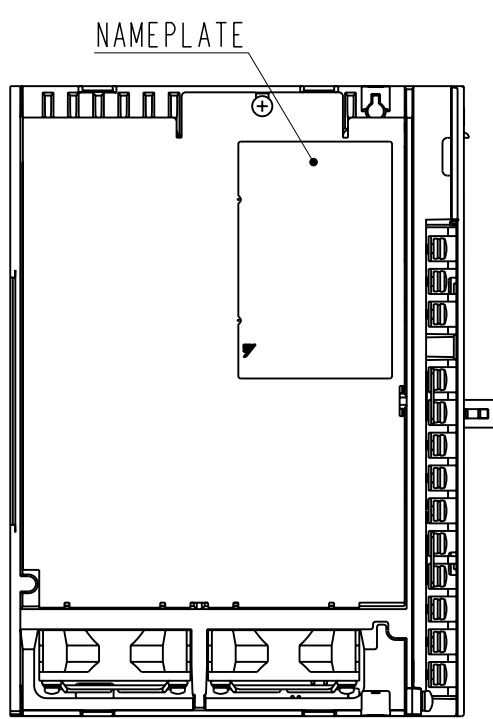
TERMINAL
14-M4 SCREWS

TERMINAL DETAIL

4-M5
SCREW HOLES

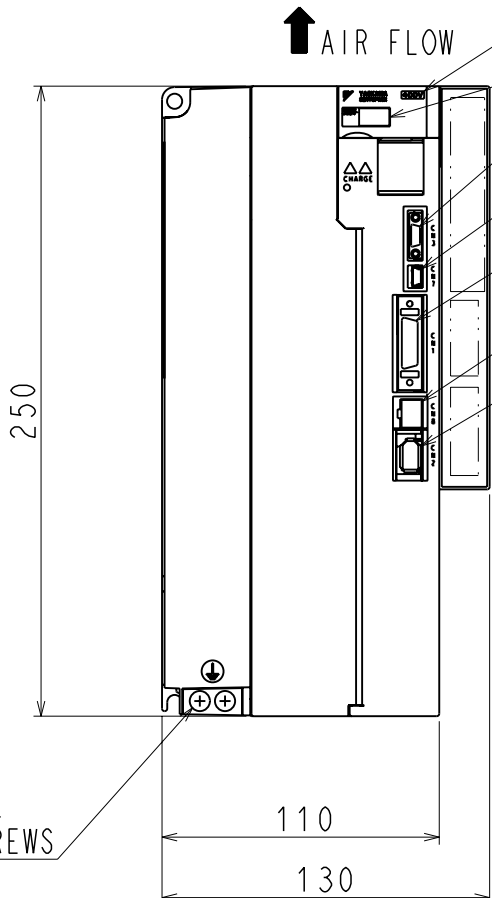


MOUNTING HOLE DIAGRAM



NAMEPLATE

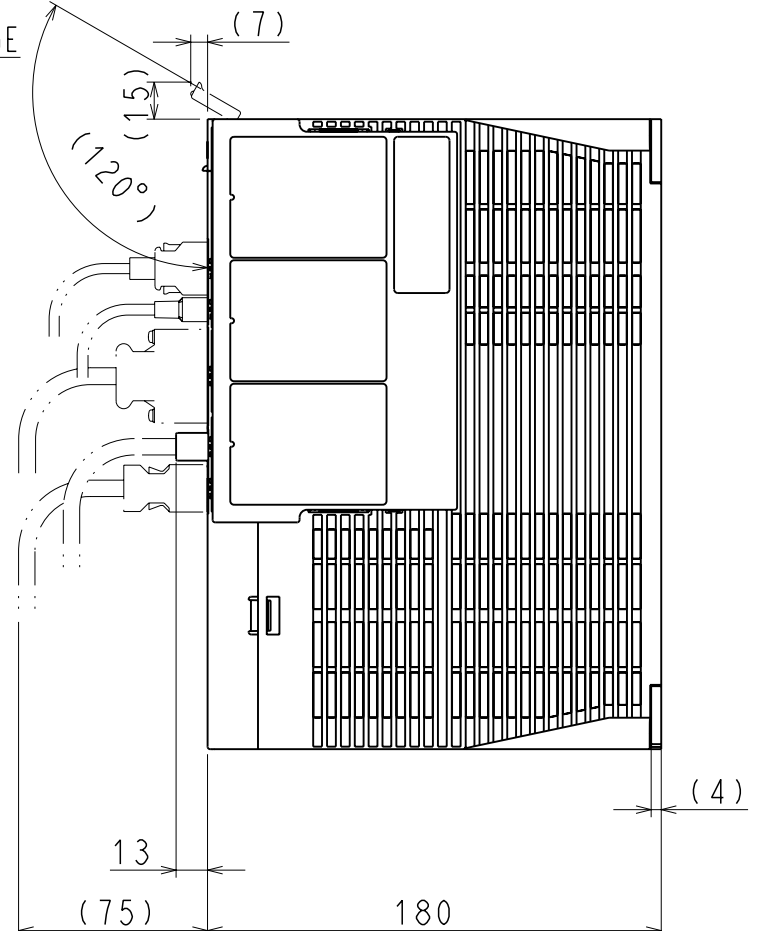
GROUND
TERMINAL
2-M4 SCREWS



AIR FLOW

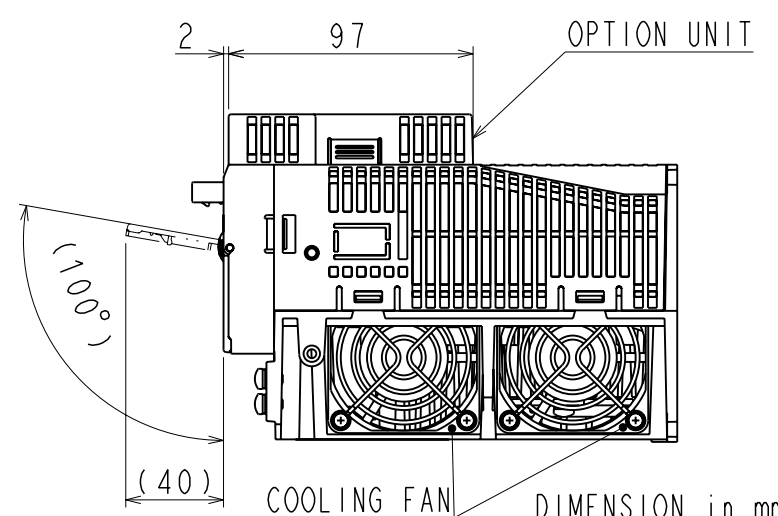
INPUT VOLTAGE
MODEL

CN3
CN7
CN1
CN8
CN2



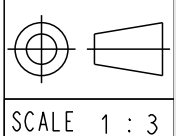
PART No.	MODEL	NUMBER OF CONTACTS	MANUFACTURER
CN1	10226-52A2PL	26	SUMITOMO 3M LIMITED
CN2	53984-0671	6	MOLEX JAPAN CO.,LTD.
CN3	HDR-EC14LFDTN-SLE-PLUS	14	HONDA TSUSHIN KOGYO CO.,LTD.
CN7	MNC23-5K5H00	5	ADVANCED-CONNECTEK INC.
CN8	1981080-1	8	Tyco Electronics AMP K.K.

The above or the equivalent is used.



DIMENSION in mm
APPROX. MASS: 3.9kg
Remove mass of the option unit.

REFERENCE ONLY



TITLE
SERVOPACK 外形図
SGDV8R4/120D□□A*
(□□: E1, E5) (*: オプション仕様)

REV. 2/2
DWG. NO. 900-048-858

SIZE A3